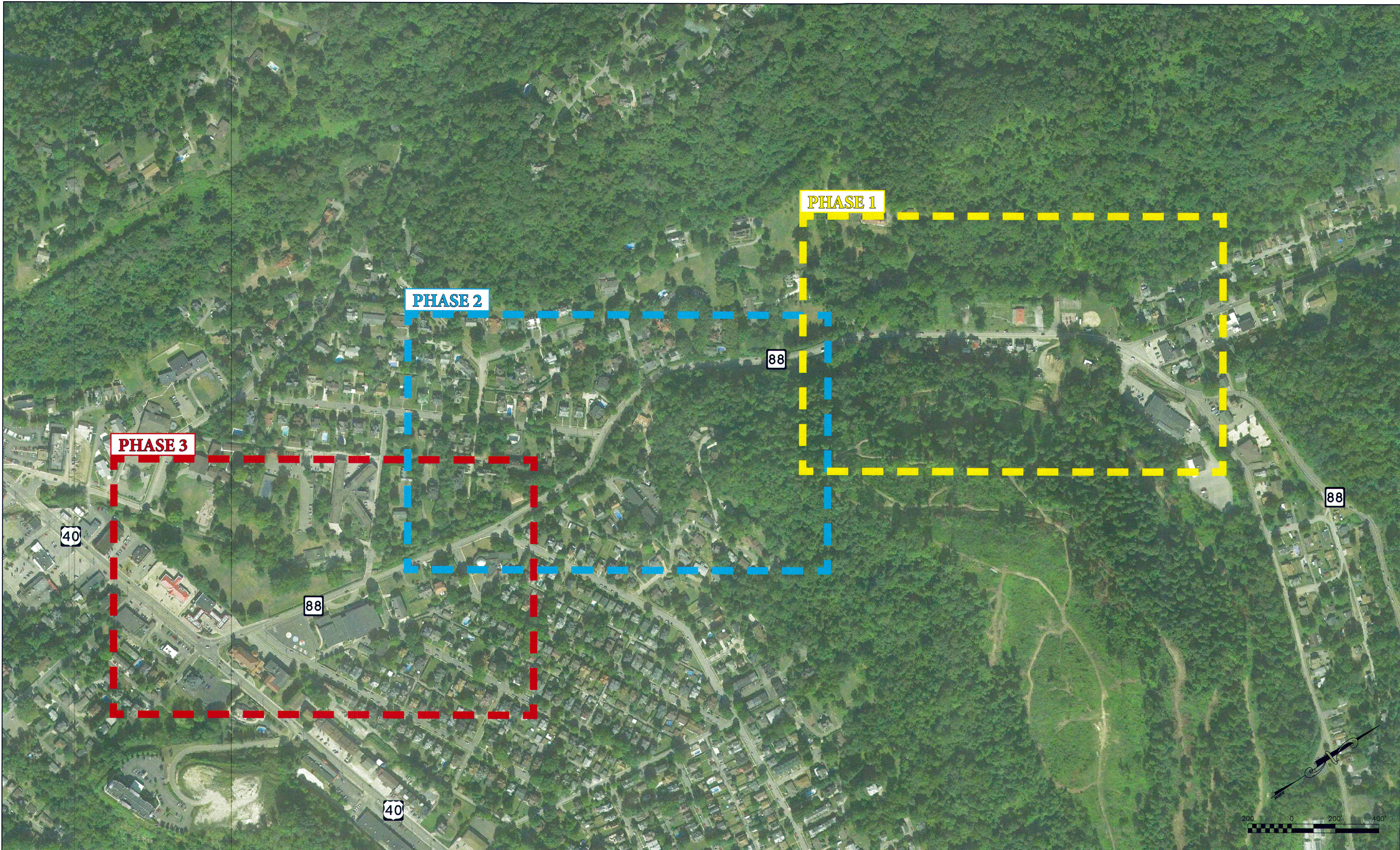


CAD FILE: R:\030-3198-BETHANY PIKE-CC & P DEVELOPMENT-\Drawing\concept 1.dwg  
PLOT DATE/TIME: 4/4/2017 4:14 PM  
LAYOUT: OVERALL  
USER: samuel a. rich



**PHASE 3**

**PHASE 2**

**PHASE 1**

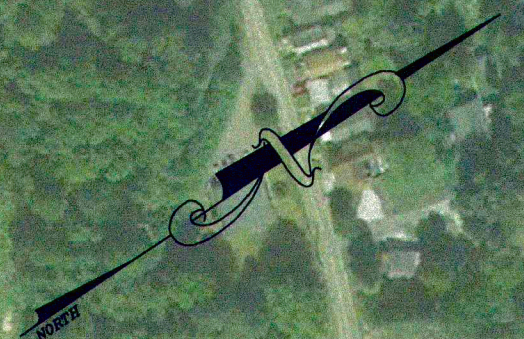
40

88

40

88

88



THE INFORMATION CONTAINED HEREIN IS THE SOLE PROPERTY OF THE THRASHER GROUP INC. REPRODUCTION OF THESE DOCUMENTS IN WHOLE OR IN PART, FOR ANY REASON WITHOUT PRIOR WRITTEN PERMISSION, IS STRICTLY PROHIBITED. COPYRIGHT © 2017 THE THRASHER GROUP INC.

**PRELIMINARY  
NOT FOR CONSTRUCTION  
2017-03-31**

SCALE:	DATE:
DRAWN:	DATE:
CHECKED:	DATE:
APPROVED:	DATE:
SURVEY DATE:	
SURVEY BY:	
FIELD BOOK No.:	

**THRASHER**  
600 WHITE OAKS BLVD. P.O. BOX 940  
BRIDGEPORT, WV 26330  
www.thrashereng.com

PHONE (304) 624-4108  
FAX (304) 624-7831

PHASE No.
CONTRACT No.
PROJECT No.

CONCEPTUAL DESIGN PLANS FOR  
GC&P DEVELOPMENT  
BETHANY PIKE STREETScape  
WHEELING, WEST VIRGINIA  
OVERALL PLAN

SHEET No. **16**  
**A**